

Gregory

House Size: 197m²



**Palmview
HOMES**

P.O. Box 89
Mackay QLD 4740

p: (07) 4942 9400
f: (07) 4942 8977

e: sales@palmviewhomes.org
www.palmviewhomes.com.au

ACN: 125 184 876
ABN: 83 125 184 876
QBCC: 1160246

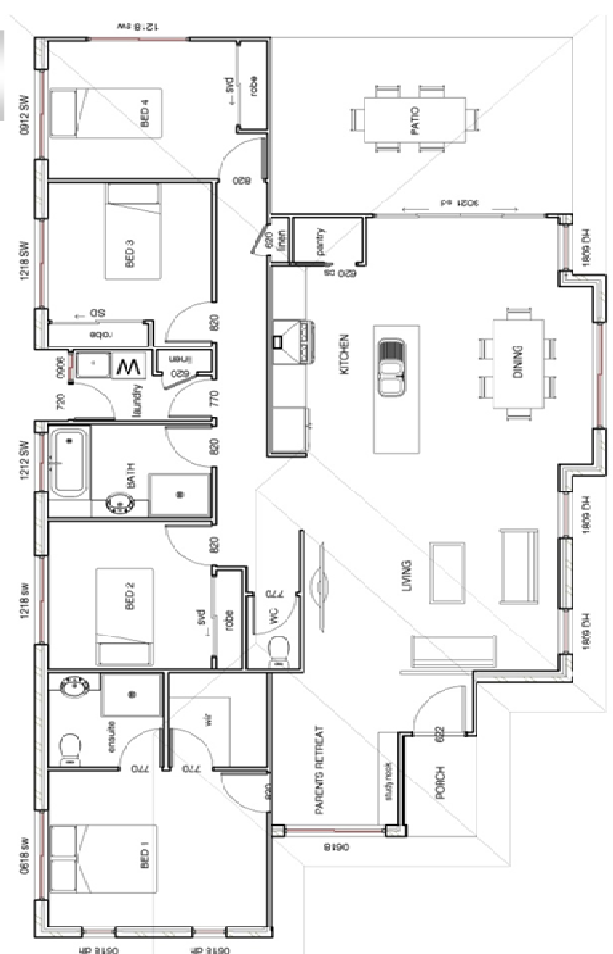


The "Gregory" home includes:

- Four spacious bedrooms
- Galley Style Kitchen with walk-in pantry, great views of the home
- Dining room features bay a window opening to rear patio
- Built In Robes to all bedrooms
- Parents Retreat
- Master Bedroom with walkin robe and ensuite
- Double Garage



**Our professional team is
available for your
complete home build**



The "Gregory" showcases must have features like vast free-flowing living space and a spacious Master bedroom featuring a parents retreat. The open plan kitchen allows for family catch up with the kids on the couch while cooking up a storm in the kitchen...

Respected Local Mackay Builder Since 2002

Disclaimer: Palmbild Pty Ltd T/As Palmview Homes reserves the right to make changes or improvements to plans, specifications, and prices without notice. All drawings and photography are for illustrative purposes only. Contract documentation will take precedence over any information or marketing brochure. All plans are copyright to Palmview Homes and must not be used or reproduced in whole or part without written permission.

fine • modern • living